

SU PROVEEDOR DE MAQUINAS DE MONTAJE DE LATIGUILLOS



D-Hydro
CATALOGUE 2020

DISTRIBUIDOR PARA ANDALUCIA:



HYNESUR

SUMINISTROS DE HIDRAULICA Y NEUMATICA DEL SUR, S.L.

P.I. Los Palillos, Calle 18, Nave 7

41500 Alcalá de Guadaira (Sevilla)

Tfno.: 954 047 523 Fax.: 955 631 705

hynesur@hynesur.com www.hynesur.com

SM 625



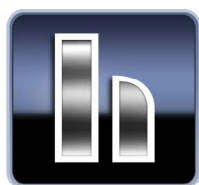
STANDARD DIE SETS

	Range (mm)	Lenght
25-06	6-16	40
25-08	8-18	40
25-11	11-21	40
25-14	14-24	40
25-17	17-27	40
25-20	20-30	45
25-23	23-33	50
25-26	26-36	50
25-31	31-41	55
25-34	34-44	60
25-39	39-49	60
25-43	43-53	65
25-45	45-55	65
25-51*	51-61	65

TECHNICAL SPECIFICATIONS

Max hose size	1" 4SP, 1¼" 2SN
Crimping force (kN):	1100
Max crimping diameter:	61 mm
Max opening:	die diameter + 10 mm
Control	Manometer
Master dies opening / Length(mm):	85/66
Crimping range (mm):	6 mm – 61 mm
Weight (kg)	29
Dimensions (LxWxH mm)	285 x 210 x 340

* Max. ferrule diameter before crimping 61 mm



HYNESUR

SUMINISTROS DE HIDRAULICA Y NEUMATICA DEL SUR, S.L.

P.I. Los Palillos, Calle 18, Nave 7

41500 Alcalá de Guadaira (Sevilla)

Tfno.: 954 047 523 Fax.: 955 631 705

hynesur@hynesur.com www.hynesur.com

SM 625 E



TECHNICAL SPECIFICATIONS

Max hose size	1" 4SH, 1¼" 2SN
Crimping force (kN):	1100
Max crimping diameter:	61 mm
Max opening:	die diameter + 10 mm
Control	Micrometer with led
Master dies opening / Length(mm):	85/66
Crimping range (mm):	6 mm – 61 mm
Weight (kg)	29
Dimensions (LxWxH mm)	285 x 210 x 340

STANDARD DIE SETS

	Range (mm)	Lenght
25-06	6-16	40
25-08	8-18	40
25-11	11-21	40
25-14	14-24	40
25-17	17-27	40
25-20	20-30	45
25-23	23-33	50
25-26	26-36	50
25-31	31-41	55
25-34	34-44	60
25-39	39-49	60
25-43	43-53	65
25-45	45-55	65
25-51*	51-61	65

* Max. ferrule diameter before crimping 61 mm

MICROMETER WITH LED



SM 25L HP/AP



TECHNICAL SPECIFICATIONS

Max hose size	1" 4 SH, 1 1/2"
Crimping force (kN)	1200
Max ferrule diameter (mm)	61
Max opening diameter (mm)	die diameter + 15
Actuation / HP model	Two-speed hand pump
Actuation / AP model	Air pressure
Control	Micrometer with led
Master dies opening / Length (mm)	90/64,5
Crimping range (mm)	6 – 61
Crimping unit weight (kg)	25
Crimping unit dimensions (LxWxH mm)	230 x 200 x 275

STANDARD DIE SETS

	Range (mm)	Length
38-06	6-16	45
38-08	8-18	45
38-11	11-21	45
38-14	14-24	45
38-17	17-27	45
38-20	20-30	55
38-23	23-33	55
38-26	26-36	55
38-30S	30-40	60
38-34S	34-44	60
38-39S	39-49	65
38-45S	45-55	65
38-51S*	51-61	65

* Max. ferrule diameter before crimping 61 mm

HAND PUMP / AIR PUMP



SM 25 HP/AP



TECHNICAL SPECIFICATIONS

Max hose size	1" 4 SH, 1 1/2"
Crimping force (kN):	1200
Max ferrule diameter (mm):	61
Max opening diameter (mm):	die diameter + 23
Actuation / HP model:	Two-speed hand pump
Actuation / AP model:	Air pressure
Control:	Micrometer with led
Master dies opening / Length (mm):	98/64,5
Crimping range (mm):	6 – 61
Crimping unit weight (kg):	25
Crimping unit dimensions (LxWxH mm)	230 x 200 x 275

STANDARD DIE SETS

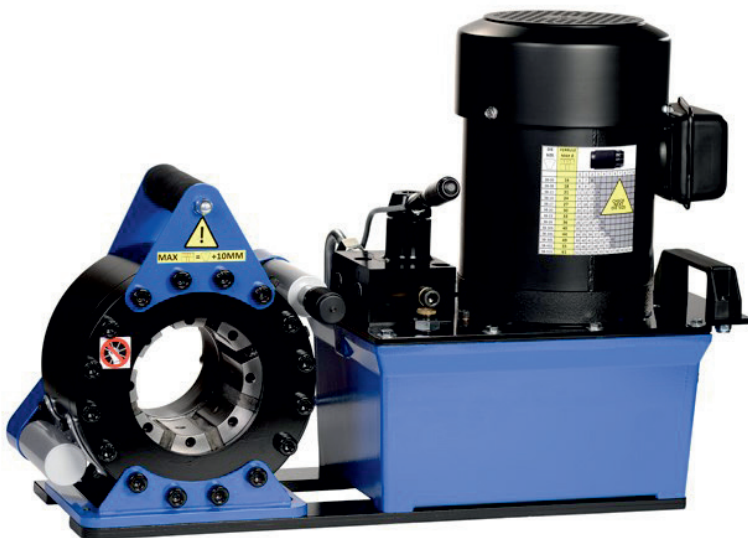
	Range (mm)	Length
38-06	6-16	45
38-08	8-18	45
38-11	11-21	45
38-14	14-24	45
38-17	17-27	45
38-20	20-30	55
38-23	23-33	55
38-26	26-36	55
38-30S	30-40	60
38-34S	34-44	60
38-39S	39-49	65
38-45S	45-55	65
38-51S*	51-61	65

* Max. ferrule diameter before crimping 61 mm

HAND PUMP / AIR PUMP



SM 25L AC



STANDARD DIE SETS

	Range (mm)	Length
38-06	6-16	45
38-08	8-18	45
38-11	11-21	45
38-14	14-24	45
38-17	17-27	45
38-20	20-30	55
38-23	23-33	55
38-26	26-36	55
38-30S	30-40	60
38-34S	34-44	60
38-39S	39-49	65
38-45S	45-55	65
38-51S*	51-61	65

* Max. ferrule diameter before crimping 61 mm

TECHNICAL SPECIFICATIONS

Max hose size	1" 4 SH, 1 1/2"
Crimping force (kN):	1200
Max crimping diameter (mm):	61
Max opening diameter (mm):	die diameter + 15
Motor:	0.37 kW 230V 1ph 50Hz Possible to operate with 12V or 24V inverter
Control :	Micrometer
Master dies opening / Length (mm):	90/64,5
Crimping range (mm):	6 – 61
Weight (kg)	55
Dimensions (LxWxH mm)	630 x 330 x 410

OPTIONS



12V or 24V inverter



HYNESUR

SUMINISTROS DE HIDRAULICA Y NEUMATICA DEL SUR, S.L.

P.I. Los Palillos, Calle 18, Nave 7

41500 Alcalá de Guadaíra (Sevilla)

Tfno.: 954 047 523 Fax.: 955 631 705

hynesur@hynesur.com www.hynesur.com



SU PROVEEDOR DE MAQUINAS DE MONTAJE DE LATIGUILLOS DESDE 1992

DISTRIBUIDOR PARA ANDALUCIA:



HYNESUR

SUMINISTROS DE HIDRAULICA Y NEUMATICA DEL SUR, S.L.

Pl. Los Palillos, Calle 18, Nave 7

41500 Alcalá de Guadaira (Sevilla)

Tfno.: 954 047 523 Fax.: 955 631 705

hynesur@hynesur.com www.hynesur.com

SM 32 M



STANDARD DIE SETS

	RANGE (mm)	LENGHT
32-06	6-16	40
32-08	8-18	40
32-11	11-21	40
32-14	14-24	40
32-17	17-27	40
32-20	20-30	45
32-23	23-33	50
32-26	26-36	50
32-31	31-41	55
32-34	34-44	60
32-39	39-49	60
32-43	43-53	65
32-45	45-55	65
32-51*	51-61	65

TECHNICAL SPECIFICATIONS

Max hose size	1 1/2" 1SN, 1 1/4" 2SN, 1" 4SP
Crimping force (kN):	1450
Max crimping Ø (mm):	61
Max opening (mm):	die diameter + 20
Standard motor:	2,2 kW 400V 3-Ph
Different voltage versions available	
Control	Micrometer
Master dies opening / Length(mm):	95/66
Crimping range (mm):	6 – 61
Weight (kg)	94 (without oil)
Dimensions (LxWxH mm)	710 x 360 x 600
Quick Change-set	Optional
Stand for machine	Optional

* Max. ferrule diameter before crimping 61 mm

OPTIONS



Quick Change Set: including storage rack & handle



Solid stand with ability to mount the Quick Change set and machine



HYNESUR

SUMINISTROS DE HIDRAULICA Y NEUMATICA DEL SUR, S.L.

P.I. Los Palillos, Calle 18, Nave 7

41500 Alcalá de Guadaíra (Sevilla)

Tfno.: 954 047 523 Fax.: 955 631 705

hynesur@hynesur.com www.hynesur.com

SM 32 MC



STANDARD DIE SETS

	RANGE (mm)	LENGHT
32-06	6-16	40
32-08	8-18	40
32-11	11-21	40
32-14	14-24	40
32-17	17-27	40
32-20	20-30	45
32-23	23-33	50
32-26	26-36	50
32-31	31-41	55
32-34	34-44	60
32-39	39-49	60
32-43	43-53	65
32-45	45-55	65
32-51*	51-61	65

* Max. ferrule diameter before crimping 61 mm

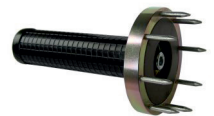
TECHNICAL SPECIFICATIONS

Max hose size	1 1/2" 1SN, 1 1/4" 2SN, 1" 4SP
Crimping force (kN):	1450
Max crimping Ø (mm):	61
Max opening (mm):	die diameter + 20
Standard motor:	2,2kW 400V 3-Ph
Different voltage versions available	
Control	Manual vernier
Master dies opening / Length(mm):	95/66
Crimping range (mm):	6 – 61
Weight (kg)	110 (without oil)
Dimensions (LxWxH mm)	640 x 430 x 590
Quick Change-set	Optional
Stand for machine	Optional

OPTIONS



Quick Change Set: including storage rack & handle



Solid stand with ability to mount the Quick Change set and machine



HYNESUR

SUMINISTROS DE HIDRAULICA Y NEUMATICA DEL SUR, S.L.

P.I. Los Palillos, Calle 18, Nave 7

41500 Alcalá de Guadaira (Sevilla)

Tfno.: 954 047 523 Fax.: 955 631 705

hynesur@hynesur.com www.hynesur.com

SM 38 M



STANDARD DIE SETS

	Range (mm)	Length
38-06	6-16	45
38-08	8-18	45
38-11	11-21	45
38-14	14-24	45
38-17	17-27	45
38-20	20-30	55
38-23	23-33	55
38-26	26-36	55
38-30	30-40	75
38-34	34-44	75
38-39	39-49	85
38-45	45-55	85
38-51*	51-61	85

TECHNICAL SPECIFICATIONS

*Max. ferrule diameter before crimping 61 mm

Max hose size	1 1/2" 2 SN, 1 1/4" 4 SH
Crimping force (kN):	1650
Max crimping Ø (mm):	61
Max opening (mm):	die diameter + 32
Standard motor:	2.2 kW 400V 3-Ph
Control	Micrometer
Master dies opening / Length(mm):	105/105
Crimping range (mm):	6 – 61
Weight (kg)	136 (without oil)
Dimensions (LxWxH mm)	710 x 440 x 650
Quick Change-set	Optional
Stand for machine	Optional

OPTIONS



Quick Change Set: including storage rack & handle



Solid stand with ability to mount the Quick Change set and machine



HYNESUR

SUMINISTROS DE HIDRAULICA Y NEUMATICA DEL SUR, S.L.

P.I. Los Palillos, Calle 18, Nave 7

41500 Alcalá de Guadaíra (Sevilla)

Tfno.: 954 047 523 Fax.: 955 631 705

hynesur@hynesur.com www.hynesur.com

SM 38 EC / SM 38 SC

Control Control



STANDARD DIE SETS

	Range (mm)	Length
38-06	6-16	45
38-08	8-18	45
38-11	11-21	45
38-14	14-24	45
38-17	17-27	45
38-20	20-30	55
38-23	23-33	55
38-26	26-36	55
38-30	30-40	75
38-34	34-44	75
38-39	39-49	85
38-45	45-55	85
38-51*	51-61	85

* Max. ferrule diameter before crimping 61 mm

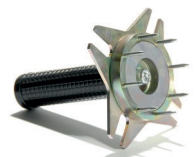
TECHNICAL SPECIFICATIONS

Max hose size	1 1/2" 2 SN, 1 1/4" 4SH
Crimping force (kN):	1650
Max crimping Ø (mm):	61
Max opening (mm):	die diameter + 32
Standard motor:	4 kW 400V 3-Ph
Different voltage versions available	
Control: SM 38 EC	Digital control
SM 38 SC	Advanced digital control
Master dies opening / Length(mm):	105/105
Crimping range (mm):	6 – 61
Weight (kg)	157 (without oil)
Dimensions (LxWxH mm)	640 x 565 x 640
Quick Change-set	Optional
Foot pedal	Optional (only for SC version)
Stand for machine	Optional

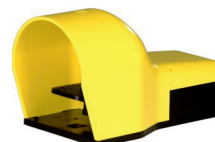
OPTIONS



Quick Change Set: including storage rack and handle



Solid stand with ability to mount the Quick Change Set and machine



Foot pedal only for SC version



HYNESUR

SUMINISTROS DE HIDRAULICA Y NEUMATICA DEL SUR, S.L.

P.I. Los Palillos, Calle 18, Nave 7

41500 Alcalá de Guadaíra (Sevilla)

Tfno.: 954 047 523 Fax.: 955 631 705

hynesur@hynesur.com www.hynesur.com

SM 50 M



TECHNICAL SPECIFICATIONS

Max hose size	2" 2 SN, 1 1/2" 4 SH
Crimping force (kN):	1800
Max crimping Ø (mm):	85
Max opening (mm):	die diameter + 32
Standard motor:	4 kW 400V 3-Ph
Control	Micrometer
Master dies opening / Length(mm):	107/105
Crimping range (mm):	6 – 85
Weight (kg)	148 (without oil)
Dimensions (LxWxH mm)	710 x 440 x 650
Quick Change-set	Optional
Stand for machine	Optional

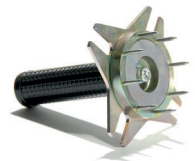
STANDARD DIE SETS

	Range (mm)	Lenght
38-06	6-16	45
38-08	8-18	45
38-11	11-21	45
38-14	14-24	45
38-17	17-27	45
38-20	20-30	55
38-23	23-33	55
38-26	26-36	55
38-30	30-40	75
38-34	34-44	75
38-39	39-49	85
38-45	45-55	85
38-51	51-61	85
38-57	57-67	90
38-63	63-73	90
38-67	67-77	90
With master dies	75-85	105

OPTIONS



Quick Change Set: including storage rack & handle



Solid stand with ability to mount the Quick Change set and machine



HYNESUR

SUMINISTROS DE HIDRAULICA Y NEUMATICA DEL SUR, S.L.

P.I. Los Palillos, Calle 18, Nave 7

41500 Alcalá de Guadaíra (Sevilla)

Tfno.: 954 047 523 Fax.: 955 631 705

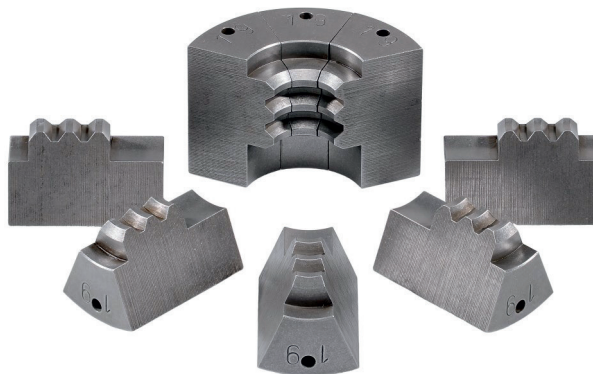
hynesur@hynesur.com www.hynesur.com

Special die sets

AIR CONDITION HOSES

Sizes A16, A19, A22

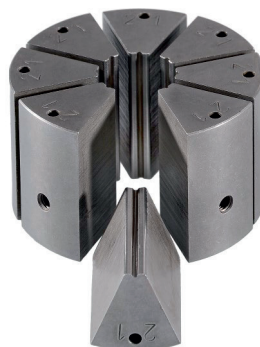
Machine types SM 625 - SM 25 - SM 32 - SM 38 - SM 50



GATES MEGACRIMP®

Sizes D21, D22, D33, D34, D35, D37, D39

Machine types SM 25* - SM 38 - SM 50



(*) For SM 25 sizes D21, D22 and D33.



HYNESUR

SUMINISTROS DE HIDRAULICA Y NEUMATICA DEL SUR, S.L.

Pl. Los Palillos, Calle 18, Nave 7

41500 Alcalá de Guadaíra (Sevilla)

Tfno.: 954 047 523 Fax.: 955 631705

hynesur@hynesur.com www.hynesur.com

CM 70 / CM 100



TECHNICAL SPECIFICATIONS

	CM 70	CM 100
Max hose size	1 1/4" 4SH	1 1/2" 4SH
Max outside Ø	70 mm	100 mm
Blade Ø	250 mm	300 mm
Blade	Smooth (standard) Carved (option)	Carved
Suction connection	100 mm	100 mm
Standard motor	2,2 kW 400V 3-Ph	4 kW 400V 3-Ph
Different voltage versions available		
Control	Footpedal	Footpedal
Blade speed	3000 rpm	3000 rpm
Weight (kg)	100	115
Dimensions (LxWxH mm)	730 x 470 x 900	730 x 470 x 900



HYNESUR

SUMINISTROS DE HIDRAULICA Y NEUMATICA DEL SUR, S.L.

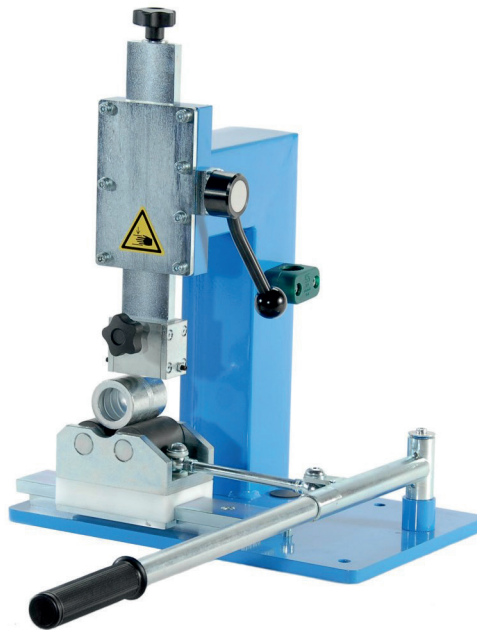
P.I. Los Palillos, Calle 18, Nave 7

41500 Alcalá de Guadaíra (Sevilla)

Tfno.: 954 047 523 Fax.: 955 631 705

hynesur@hynesur.com www.hynesur.com

MM 51



TECHNICAL SPECIFICATIONS

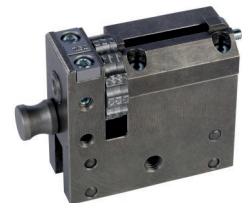
Max ferrule size	85 mm
Marking height	3 mm
2 line stamp holder	Standard
Numbering wheel stamp holder	Optional
Weight (kg)	23 kg
Dimensions (LxWxH mm)	285 x 190 x 340

STAMP HOLDERS

2-line stamp holder: 2 x 16 Characters



Numbering wheel stamp holder: 10 characters + 3 digits wheel



Character set is sold separately



HYNESUR

SUMINISTROS DE HIDRAULICA Y NEUMATICA DEL SUR, S.L.

P.I. Los Palillos, Calle 18, Nave 7

41500 Alcalá de Guadaíra (Sevilla)

Tfno.: 954 047 523 Fax.: 955 631 705

hynesur@hynesur.com www.hynesur.com

YL-20



STANDARD DIE SETS

Size	Range (mm)	Length
32-10	10-14	55
32-14	14-16	55
32-16	16-19	55
32-19	19-22	55
32-22	22-26	70
32-26	26-30	70
32-30	30-34	75
32-34	34-39	75
32-39	39-45	75
32-45	45-55	90

TECHNICAL SPECIFICATIONS

Max hose size	1 ¼"
With additional die sets	1 ½"
Crimping force (kN)	1700
Max opening (mm)	die diameter + 26
Standard motor	3,6 kW 400V 3-ph
Different voltage versions available	
Control	Digital control
Master dies opening/Length (mm)	124/80
Crimping range (mm)	
With standard die sets	10 – 55
With additional die sets	6 – 61
Weight (kg)	200 (without oil)
Dimensions (LxWxH mm)	600 x 480 x 600
Foot pedal	Standard
Die sets	Standard
10-14-16-19-22-26-30-34-39-45	



HYNESUR

SUMINISTROS DE HIDRAULICA Y NEUMATICA DEL SUR, S.L.

P.I. Los Palillos, Calle 18, Nave 7

41500 Alcalá de Guadaíra (Sevilla)

Tfno.: 954 047 523 Fax.: 955 631 705

hynesur@hynesur.com www.hynesur.com

YL-20 S



STANDARD DIE SETS

Size	Range (mm)	Length
32-10	10-14	55
32-14	14-16	55
32-16	16-19	55
32-19	19-22	55
32-22	22-26	70
32-26	26-30	70
32-30	30-34	75
32-34	34-39	75
32-39	39-45	75
32-45	45-55	90

TECHNICAL SPECIFICATIONS

Max hose size	1 ¼"
With additional die sets	1 ½"
Crimping force (kN)	1700
Max opening (mm)	die diameter + 26
Standard motor	3,6kW 400V 3-ph
Different voltage versions available	
Control	Digital control
Master dies opening/Length (mm)	124/80
Crimping range (mm)	
With standard die sets	10 – 55
With additional die sets	6 – 61
Weight (kg)	230 (without oil)
Dimensions (LxWxH mm)	600 x 480 x 1300
Quick Change-set	Standard
Foot pedal or Back stop device	Standard
Stand for machine	Standard
Die sets	Standard
10-14-16-19-22-26-30-34-39-45	



HYNESUR

SUMINISTROS DE HIDRAULICA Y NEUMATICA DEL SUR, S.L.

P.I. Los Palillos, Calle 18, Nave 7

41500 Alcalá de Guadaira (Sevilla)

Tfno.: 954 047 523 Fax.: 955 631 705

hynesur@hynesur.com www.hynesur.com

YL-32



STANDARD DIE SETS

Size	Range (mm)	Length
32-10	10-14	55
32-14	14-16	55
32-16	16-19	55
32-19	19-22	55
32-22	22-26	70
32-26	26-30	70
32-30	30-34	75
32-34	34-39	75
32-39	39-45	75
32-45	45-51	90
32-51	51-57	90
32-57	57-63	100
32-63	63-69	110
32-69	69-79	110

TECHNICAL SPECIFICATIONS

Max hose size	2" 4 SP
Crimping force (kN)	2200
Max opening (mm)	die diameter + 32
Standard motor	3,6 kW 400V 3-ph
Different voltage versions available	
Control	Digital control
Master dies opening / Length (mm)	132/80
Crimping range (mm)	
With standard die sets	10 – 79
With additional die sets	6 – 88
Weight (kg)	270 (without oil)
Dimensions (LxWxH mm)	600 x 480 x 1300
Die sets	Standard
10-14-16-19-22-26-30-34-39-45-51-57-63-69	
Quick Change-set	Standard
Foot pedal	Standard
Stand for machine	Standard



HYNESUR

SUMINISTROS DE HIDRAULICA Y NEUMATICA DEL SUR, S.L.

P.I. Los Palillos, Calle 18, Nave 7

41500 Alcalá de Guadaira (Sevilla)

Tfno.: 954 047 523 Fax.: 955 631 705

hynesur@hynesur.com www.hynesur.com

YL-65



STANDARD DIE SETS

Size	Range (mm)	Length
32-10	10-14	55
32-14	14-16	55
32-16	16-19	55
32-19	19-22	55
32-22	22-26	70
32-26	26-30	70
32-30	30-34	75
32-34	34-39	75
32-39	39-45	75
32-45	45-51	90
32-51	51-57	90
32-57	57-63	100
32-63	63-69	110
32-69	69-79	110
32-74	74-78	110
32-78	78-88	110

TECHNICAL SPECIFICATIONS

Max hose size	2" 4SP
Crimping force (kN)	2400
Max crimping Ø (mm)	88
Max opening (mm)	die diameter + 65
Standard motor	5,5kW 400V 3-Ph
Different voltage versions available	
Control	Digital control
Master dies opening / Length (mm)	163/97
Crimping range (mm)	10 - 88
With additional die sets (mm)	
	6 - 88
Weight (kg)	1200 (without oil)
Dimensions (LxWxH mm)	850 x 1000 x 1500
Die sets	Standard
10-14-16-19-22-26-30-34-39-45-51-57-63-69-74-78	
Quick change-set	Standard
Back stop device	Standard
Foot pedal	Standard
Oil cooler	Standard
Mirror	Standard



HYNESUR

SUMINISTROS DE HIDRAULICA Y NEUMATICA DEL SUR, S.L.

P.I. Los Palillos, Calle 18, Nave 7

41500 Alcalá de Guadaira (Sevilla)

Tfno.: 954 047 523 Fax.: 955 631 705

hynesur@hynesur.com www.hynesur.com

YL-80



STANDARD DIE SETS

Size	Range (mm)	Length
32-10	10-14	55
32-14	14-16	55
32-16	16-19	55
32-19	19-22	55
32-22	22-26	70
32-26	26-30	70
32-30	30-34	75
32-34	34-39	75
32-39	39-45	75
32-45	45-51	90
32-51	51-57	90
32-57	57-63	100
32-63	63-69	110
32-69	69-74	110
32-74	74-78	110
32-78	78-87	110
80-84	84-92	120
80-92	92-100	120
80-100	100-108	120
80-108	108-116	120
80-116	116-126	120

TECHNICAL SPECIFICATIONS

Max hose size	4"
Crimping force (kN)	3200
Max crimping Ø (mm)	126
Max opening (mm)	die diameter + 80
Standard motor	5,5kW 400V 3-Ph
Different voltage versions available	
Control	Digital control
Master dies opening / Length (mm)	220/97
Crimping range (mm)	10 - 126
Weight (kg)	1350 (without oil)

Dimensions (LxWxH mm)	850 x 1000 x 1600
Die sets	Standard
	10-14-16-19-22-26-30-34-39-45-51-57-63-69-74-78-84-92-100-108-116
Quick Change-set	Standard
Back stop device	Standard
Foot pedal	Standard
Oil cooler	Standard
Mirror	Standard



HYNESUR

SUMINISTROS DE HIDRAULICA Y NEUMATICA DEL SUR, S.L.

P.I. Los Palillos, Calle 18, Nave 7

41500 Alcalá de Guadaíra (Sevilla)

Tfno.: 954 047 523 Fax.: 955 631 705

hynesur@hynesur.com www.hynesur.com

YL-125



TECHNICAL SPECIFICATIONS

Max hose size	6"
Crimping force (kN)	4000
Max crimping Ø (mm)	234
Max opening (mm)	die diameter + 125
Standard motor	5,5kW 400V 3-Ph
Different voltage versions available	
Control	Digital control
Master dies opening / Length (mm)	355/116
Crimping range (mm)	10 - 234
With additional die sets (mm)	6 - 239
Weight (kg)	3000 (without oil)

STANDARD DIE SETS

Size	Range (mm)	Lenght
32-10	10-14	55
32-14	14-16	55
32-16	16-19	55
32-19	19-22	55
32-22	22-26	70
32-26	26-30	70
32-30	30-34	75
32-34	34-39	75
32-39	39-45	75
32-45	45-51	90
32-51	51-57	90
32-57	57-63	100
32-63	63-69	110
32-69	69-74	110
32-74	74-78	110
32-78	78-87	110
125-84	84-92	120
125-92	92-100	120
125-100	100-108	120
125-108	108-116	120
125-116	116-126	120
125-126	126-136	120
125-136	136-146	120
125-146	146-156	120
125-156	156-166	120
125-166	166-178	120
125-178	178-190	120
125-190	190-205	120
125-205	205-234	120

Dimensions (LxWxH mm)	1050 x 1300 x 1750
Die sets	Standard
10-14-16-19-22-26-30-34-39-45-51-57-63-69-74-78-84-92-100-108-116-126-136-146-156-166-178-190-205	
Quick Change-set	Standard
Back stop device	Standard
Foot pedal	Standard
Oil cooler	Standard
Mirror	Standard



HYNESUR

SUMINISTROS DE HIDRAULICA Y NEUMATICA DEL SUR, S.L.

P.I. Los Palillos, Calle 18, Nave 7

41500 Alcalá de Guadaíra (Sevilla)

Tfno.: 954 047 523 Fax.: 955 631 705

hynesur@hynesur.com www.hynesur.com

YL-330



OPTIONAL DIE SETS

Size	Range (mm)	Length
125-84	84-92	116
125-92	92-100	116
125-100	100-108	116
125-108	108-116	116
125-116	116-126	116
125-126	126-136	116
125-136	136-146	116
125-146	146-156	116
125-156	156-166	116
125-166	166-178	116
125-178	178-190	116
125-190	190-202	116
330-205	205-220	220
330-220	220-235	220
330-235	235-250	220
330-250	250-270	220
330-270	270-290	220
330-290	290-305	220
330-305	305-335	220

TECHNICAL SPECIFICATIONS

Max hose size	12"
Crimping force (kN):	8300
Max crimping Ø (mm):	335
Max opening (mm):	die diameter + 155
Standard motor:	11 kW 400V 3-Ph
Different voltage versions available	
Control	Digital control
Master dies opening / Length (mm):	485/220
Crimping range (mm):	10 - 350
Weight (kg)	4500 + 500 (without oil)



HYNESUR

SUMINISTROS DE HIDRAULICA Y NEUMATICA DEL SUR, S.L.

P.I. Los Palillos, Calle 18, Nave 7

41500 Alcalá de Guadaíra (Sevilla)

Tfno.: 954 047 523 Fax.: 955 631 705

hynesur@hynesur.com www.hynesur.com

YL-SF 60



OPTIONAL DIE SETS

Size	Range (mm)	Length
SF60-10	10-12	55
SF60-12	12-14	55
SF60-14	14-16	55
SF60-16	16-19	55
SF60-19	19-22	55
SF60-22	22-24	55
SF60-24	24-30	55
SF60-30	30-38	55
SF60-38	38-45	55
SF60-45	45-52	55

TECHNICAL SPECIFICATIONS

Max hose size	1 ¼"
Crimping force (kN):	600
Max crimping Ø (mm):	87
Max opening (mm):	die diameter +25, +100
Standard motor:	3,6 kW 400V 3-ph
Different voltage versions available	
Control	Digital control
Crimping range (mm):	10 - 87
Weight (kg)	1540 (without oil)
Dimensions (LxWxH mm)	842 x 1105 x 1850
Die sets	Optional
10-12-14-16-19-22-24-30-38-45	
Back stop device	Optional
Quick change set	Standard
Foot pedal	Standard



HYNESUR

SUMINISTROS DE HIDRAULICA Y NEUMATICA DEL SUR, S.L.

P.I. Los Palillos, Calle 18, Nave 7

41500 Alcalá de Guadaíra (Sevilla)

Tfno.: 954 047 523 Fax.: 955 631 705

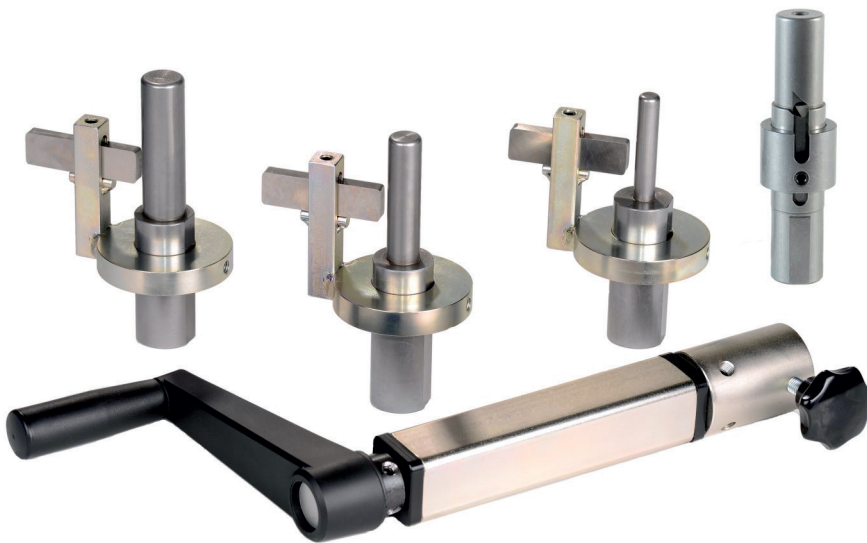
hynesur@hynesur.com www.hynesur.com

HS 50 M

SKIVING HEADS

External size	Range (mm)
3/16"	20-55
1/4"	20-55
5/16"	20-55
3/8"	20-55
1/2"	20-55
5/8"	20-55
3/4"	20-55
1"	30-90
1 1/4"	30-90
1 1/2"	30-90
2"	30-90

Internal size	Range
3/8"	adjustable ↕↔
1/2"	adjustable ↕↔
5/8"	adjustable ↕↔
3/4"	adjustable ↕↔
1"	adjustable ↕↔
1 1/4"	adjustable ↕↔
1 1/2"	adjustable ↕↔
2"	adjustable ↕↔



Skiving heads are sold separately

TECHNICAL SPECIFICATIONS

Max hose size	2" (internal & external)
Control	Manual
Weight (kg)	2,25
Dimensions (LxWxH mm)	415 x 235 x 50



HYNESUR

SUMINISTROS DE HIDRAULICA Y NEUMATICA DEL SUR, S.L.

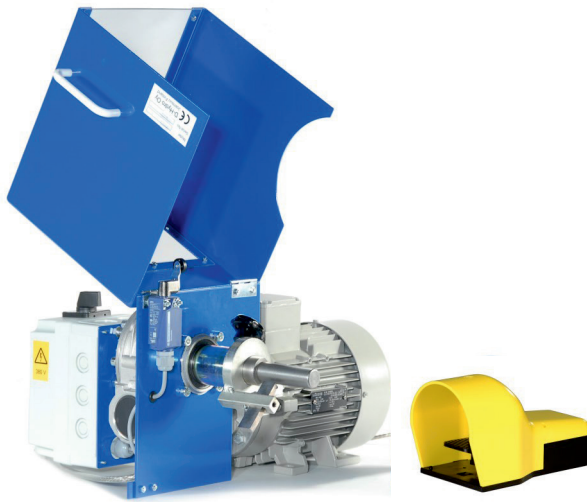
P.I. Los Palillos, Calle 18, Nave 7

41500 Alcalá de Guadaíra (Sevilla)

Tfno.: 954 047 523 Fax.: 955 631 705

hynesur@hynesur.com www.hynesur.com

HS 50



TECHNICAL SPECIFICATIONS

Max hose size	2" (internal & external)
Standard motor	1,1 kW 400V 3-Ph
Different voltage versions available	
Control	Footpedal
Blade speed	150 rpm
Weight (kg)	25
Dimensions (LxWxH mm)	460 x 490 x 270

SKIVING HEADS

External size	Range (mm)
3/16"	20-55
1/4"	20-55
5/16"	20-55
3/8"	20-55
1/2"	20-55
5/8"	20-55
3/4"	20-55
1"	30-90
1 1/4"	30-90
1 1/2"	30-90
2"	30-90
Internal size	Range
3/8"	adjustable ↔
1/2"	adjustable ↔
5/8"	adjustable ↔
3/4"	adjustable ↔
1"	adjustable ↔
1 1/4"	adjustable ↔
1 1/2"	adjustable ↔
2"	adjustable ↔



Skiving heads are sold separately



HYNESUR

SUMINISTROS DE HIDRAULICA Y NEUMATICA DEL SUR, S.L.

P.I. Los Palillos, Calle 18, Nave 7

41500 Alcalá de Guadaíra (Sevilla)

Tfno.: 954 047 523 Fax.: 955 631 705

hynesur@hynesur.com www.hynesur.com

YL-NC 20



STANDARD DIE SETS

Size	Range (mm)	Length
NC20-12	12-14	3
NC20-14	14-16	3
NC20-16	16-19	4
NC20-19	19-22	4
NC20-22	22-26	4,5
NC20-26	26-30	4,5
NC20-30	30-34	5
NC20-34	34-39	5
NC20-39	39-45	5
NC20-45	45-52	5
NC20-52	52-57	5
NC20-57	57-66	5

TECHNICAL SPECIFICATIONS

Max hose size	1 1/4"
Crimping force (kN):	500
Max crimping Ø (mm):	66
Max opening (mm):	die diameter + 20
Standard motor:	3,6kW 400V 3-ph
Different voltage versions available	
Control	Digital control
Crimping range (mm):	4 - 66
Weight (kg)	300 (without oil)
Dimensions (LxWxH mm)	600 x 1000 x 930
Die sets	Standard
12-14-16-19-22-26-30-34-39-45-52-57	
Foot pedal	Standard



HYNESUR

SUMINISTROS DE HIDRAULICA Y NEUMATICA DEL SUR, S.L.

Pl. Los Palillos, Calle 18, Nave 7

41500 Alcalá de Guadaíra (Sevilla)

Tfno.: 954 047 523 Fax.: 955 631 705

hynesur@hynesur.com www.hynesur.com

YL-NC 30



STANDARD DIE SETS

Size	Range (mm)	Length
NC20-12	12-14	3
NC20-14	14-16	3
NC20-16	16-19	4
NC20-19	19-22	4
NC20-22	22-26	4,5
NC20-26	26-30	4,5
NC20-30	30-34	5
NC20-34	34-39	5
NC20-39	39-45	5
NC20-45	45-52	5
NC20-52	52-57	5
NC20-57	57-66	5
NC30-64	64-69	5
NC30-69	69-74	5
NC30-74	74-78	5

TECHNICAL SPECIFICATIONS

Max hose size	2"
Crimping force (kN):	740
Max crimping Ø (mm):	82
Max opening (mm):	die diameter + 26
Standard motor:	3,6kW 400V 3-ph
Different voltage versions available	
Control	Digital control
Crimping range (mm):	4 - 82
Weight (kg)	340 (without oil)
Dimensions (LxWxH mm)	600 x 1000 x 930
Die sets	Standard
12-14-16-19-22-26-30-34-39-45-52-57-64-69-74	
Foot pedal	Standard



HYNESUR

SUMINISTROS DE HIDRAULICA Y NEUMATICA DEL SUR, S.L.

Pl. Los Palillos, Calle 18, Nave 7

41500 Alcalá de Guadaíra (Sevilla)

Tfno.: 954 047 523 Fax.: 955 631 705

hynesur@hynesur.com www.hynesur.com

CR 6



TECHNICAL SPECIFICATIONS

Levels	6
Weight (kg)	75
Dimensions (LxWxH mm)	1165 x 1115 x 2050



HYNESUR

SUMINISTROS DE HIDRAULICA Y NEUMATICA DEL SUR, S.L.

P.I. Los Palillos, Calle 18, Nave 7

41500 Alcalá de Guadaíra (Sevilla)

Tfno.: 954 047 523 Fax.: 955 631 705

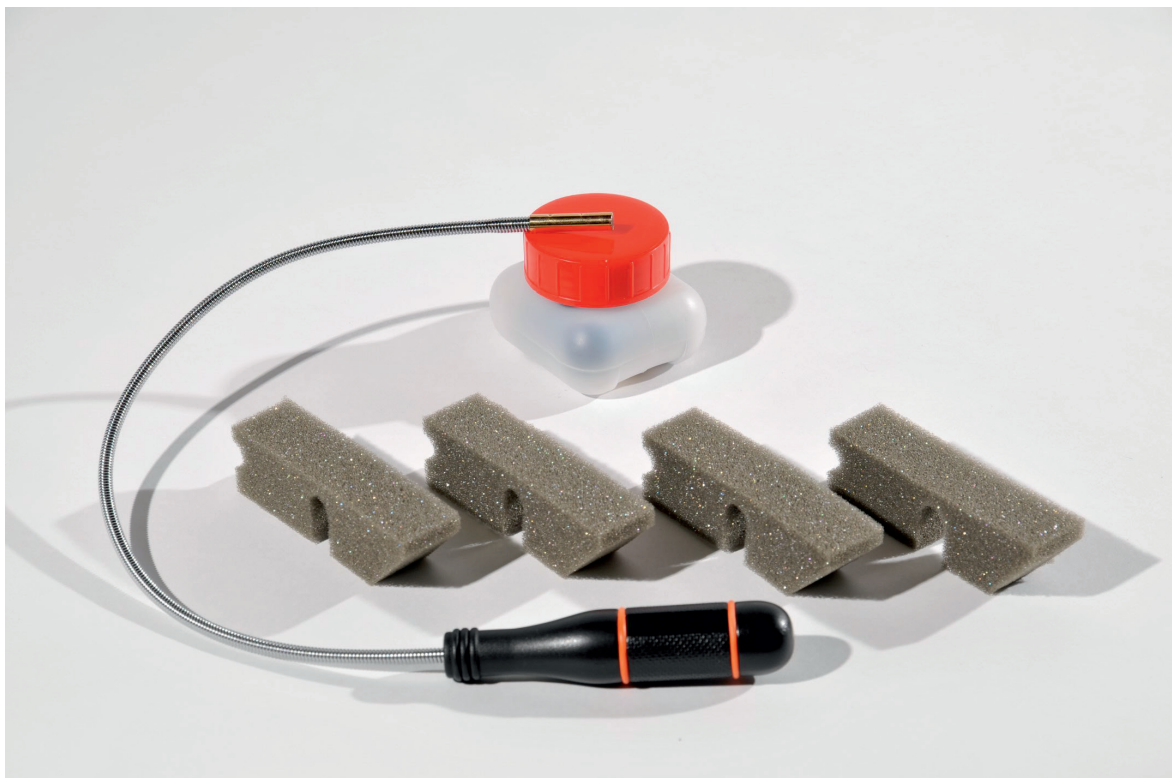
hynesur@hynesur.com www.hynesur.com

Service kit

TECHNICAL SPECIFICATIONS

Protection pads*	4 pcs
Flexible magnet	1 pc
Heavy duty Molybdenum grease	50 gr
Machine types	SM 625 - SM 25 - SM 32 - SM 38 - SM 50

(*) 8 pcs of rubber springs for SM 625 and SM 625 E



HYNESUR

SUMINISTROS DE HIDRAULICA Y NEUMATICA DEL SUR, S.L.

P.I. Los Palillos, Calle 18, Nave 7

41500 Alcalá de Guadaira (Sevilla)

Tfno.: 954 047 523 Fax.: 955 631 705

hynesur@hynesur.com www.hynesur.com

NOTAS



SU PROVEEDOR DE MAQUINAS DE MONTAJE DE LATIGUILLOS DESDE 1992

DISTRIBUIDOR PARA ANDALUCIA:



HYNESUR

SUMINISTROS DE HIDRAULICA Y NEUMATICA DEL SUR, S.L.

P.I. Los Palillos, Calle 18, Nave 7

41500 Alcalá de Guadaira (Sevilla)

Tfno.: 954 047 523 Fax.: 955 631 705

hynesur@hynesur.com www.hynesur.com